

# 2017年7月乐理第2级试卷样卷Y 模拟答案

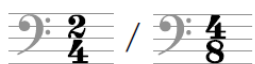
## 答案使用方法

- 答案与试卷的问题顺序相同，并尽可能采用与试卷相同的排版，以便于对照。
- 如果答案须在五线谱上显示，则原题的五线谱印为灰色，答案为黑色，例如：



- 备选答案以斜线 (/) 或“或”字隔开，例如：

减慢 / 渐慢



- 要求考生写音阶、和弦或三和弦的问题的答案只显示一个八度。在不同八度上的其他合理答案也可获得满分。

- 1 (a) 3rd 1st / 5th 4th 8th / 7th 6th 2nd 3rd (10)  
 8th / 8ve 8ve / 1st  
 (b) F# / F sharp

2 (10)

3 (10)

4 (10)

(a)

(b) Bb major

5 (10)

6 (10)

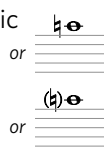
7

(10)



harmonic

melodic



8

(10)

*mp* means:

- moderately loud
- very quiet
- moderately quiet
- quiet

*simile* means:

- in the same way
- in the style of
- sustained
- without

**Lento** means:

- held back
- at a medium speed
- slow
- very slow



means:

- slur; perform smoothly
- tie; detached
- slur; detached
- tie; hold for the value of both notes

**non troppo** means:

- too much
- not too much
- very much
- not in time

**maestoso** means:

- movement
- majestic
- in the style of a march
- very, much

9 (a)



(10)

- (ii) 8
- (iii) minim / half note
- (iv) 3 / 7



**Andante lento**



(10)